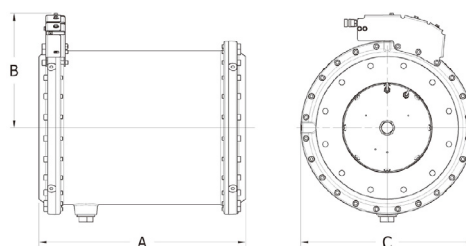
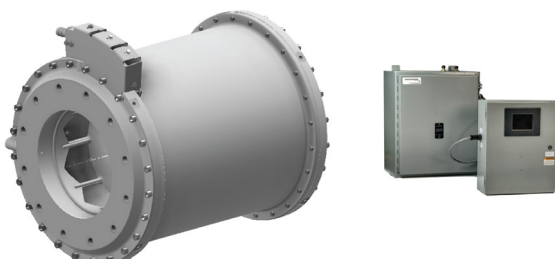


250, 300, 350, 400mm (10,12,14,16") NDP

VALVE SPECIFICATIONS

Characteristics	Pressure Independent
Service	Heating Water or Chilled Water, Glycol
Maximum Design Flow at 5 PSID [0.34bar] Minimum	10" : 2200 GPM [138 LPS] / 8327.9 LPM 12" : 3000 GPM [189 LPS] / 11356.2 LPM 14" : 4400 GPM [278 LPS] / 16655.8 LPM 16" : 5500 GPM [347 LPS] / 20819.8 LPM
Maximum Flow Variation	+/- 5%
Differential Pressure Range	5 - 70 PSID [0.34 - 4.83 bar]
Body Pressure Rating	150 PSIG [10.3 bar] / 300 PSIG [20.7 bar]
Close Off Pressure	Contact Factory
Pipe Connections	ANSI 125# FF Flanged (150 PSIG) [10.3 bar] ANSI 250# FF Flanged (300 PSIG) [20.7 bar]
Materials	
Body	Carbon Steel, Stainless Steel
Internals	ASTM B16 Brass / ASTM A536 Ductile Iron / 304 SS
Seals	EPDM / Nitrile
Shutoff	ASME FCI 70-2
Leakage	ASME FCI 70-2, Class II
Rangeability	10 : 1
Maximum Temperature	145°F [63°C]
P/T Ports	3
Weight (Without Actuator)	10" & 12" : 650 lbs [295kg] / 14" & 16" : 2400 lbs [1089 kg]
Actuation	Factory Supplied Hydraulic

Guaranteed ΔT



Dimensions in inches [mm]

Valve Size	A	B	C
10" NDP [250mm]	27.5 [699]	15.2 [386]	23 [584]
12" NDP [300mm]	27.5 [699]	15.2 [386]	23 [584]
14" NDP [350mm]	32.5 [826]	23.2 [590]	37.5 [953]
16" NDP [400mm]	32.5 [826]	23.2 [590]	37.5 [953]

For information only and not for fabrication